



# WEIHUA GROUP

ADD: Weihua Rd., Changyuan County, Henan, China  
Web: [www.cranemanufacturers.net](http://www.cranemanufacturers.net)  
Email: [overhead@cranemanufacturers.net](mailto:overhead@cranemanufacturers.net)

China, Henan, Mar.15th, 2017

Ref.: Overhead Crane & Electric hoist

To Whom it may Concern:

First at all let us introduce ourselves: **WEIHUA** is one of the largest crane manufacturers in china, with 6800 workers, nearly 30 years' experience and 3000000 square meter factory area. We have exported our cranes to more than 106 countries worldwide. We trust that this overhead crane and electric hoist offer strictly meets with your requirement, however, should you require further information, please do not hesitate to contact us, we will be pleased to be of further assistance.

As follows we are pleased in submitting for your kind consideration our quote regarding the design, manufacturing and supply of following crane & hoist:





# WEIHUA GROUP

ADD: Weihua Rd., Changyuan County, Henan, China

Web: [www.cranemanufacturers.net](http://www.cranemanufacturers.net)

Email: [overhead@cranemanufacturers.net](mailto:overhead@cranemanufacturers.net)

## I . PRICE DETAILS (USD:\$)

| No.   | DESCRIPTION  | Sample  | UNIT PRICE                  | QTY.  | Total Price (FOB Tianjin) |
|-------|--|---|-----------------------------|-------|---------------------------|
| 1     | <b>5Ton MD Electric Hoist</b> , Lifting height 9m, Ground control, MD <b>double speed</b>  |    | USD1,850                    | 1 set | USD1,850                  |
| 2     | <b>5Ton Single Girder Overhead Crane</b> , Span 18m (not include electric hoist)           |    | USD4,500                    | 1 set | USD4,500                  |
| att-1 | Crane long traveling power supply multi-pole safety slide wire(including all accessories)  |    | USD15/m                     | 30 m  | USD450                    |
| att-2 | Crane long traveling Rails P24 (including rail accessories)                                |    | USD19/m                     | 60 m  | USD1,140                  |
| 3     | <b>10Ton MD Electric Hoist</b> , Lifting height 9m, Ground control, MD <b>double speed</b> |  | USD3,350                    | 1 set | USD3,350                  |
| 4     | <b>10Ton Single Girder Overhead Crane</b> , Span 18m (not include electric hoist)          |  | USD5,500                    | 1 set | USD5,500                  |
| att-1 | Crane long traveling power supply multi-pole safety slide wire(including all accessories)  |  | USD15/m                     | 30 m  | USD450                    |
| att-2 | Crane long traveling Rails P24 (including rail accessories)                                |  | USD19/m                     | 60 m  | USD1,140                  |
| 5     | Domestic freight & Port charge<br>Manufacturing factory to port, China(by truck)           |  | Included in the above items |       |                           |

Note: The price include per set equipment cost, export packaging/fumigation, transportation from our manufacturing factory to China Tianjin Port and Port Charge; including crane long traveling power supply wire and rail track( taking 30m as long traveling distance).





# WEIHUA GROUP

ADD: Weihua Rd., Changyuan County, Henan, China

Web: [www.cranemanufacturers.net](http://www.cranemanufacturers.net)

Email: [overhead@cranemanufacturers.net](mailto:overhead@cranemanufacturers.net)

## II. BASIC TECHNICAL DESCRIPTION

1. Main electric adopt Schneider Electric; Others according to WEIHUA CRANES standard.
  2. Operation Mode: Ground control
  3. Steel structure strictly through heat treatment, slot blasting, etc. Painting with epoxy zinc rich primer.(Crane test all by National Crane Test Laboratory in Weihua)
  4. With overload limiter, anti-collision system, etc.
- Others related to WEIHUA Cranes technical info.

### **TERMS AND CONDITIONS:**

#### **AA – PAYMENT TERMS:**

50%T/T advance payment, 50%T/T after checked and acceptance by both sides before delivery.

#### **BB – DELIVERY TERMS:**

**PACKING:** export standard, packed by high quality plywood crate and wove bags.

**DELIVERY PERIOD:** Within 30days since the advance payment to the account.

**Delivery place:** Truck transport from manufacturing plant to Tianjin port, China

#### **CC – VALIDITY OF QUOTE:**

10 days.

#### **DD – GUARANTEE:**

12 months from Commissioning.

#### **EE –SUPERVISION FOR INSTALLATION. COMMISSIONING AND TRAINING:**

We can arrange Engineer team for Supervision, Installation, Commissioning & Workers Training. Buyer should be responsible for each of our technician's accommodation, meals, round-trip tickets, self-security and salary.

#### **FF – OPERATION AND MAINTENANCE MANUALS. PACKING LIST:**

We will provide 01 Set of Operation and Maintenance Manuals, Packing List in English Version.

#### **GG – PAINTING:**

The Cranes will be painted in Color according to client's requirements.





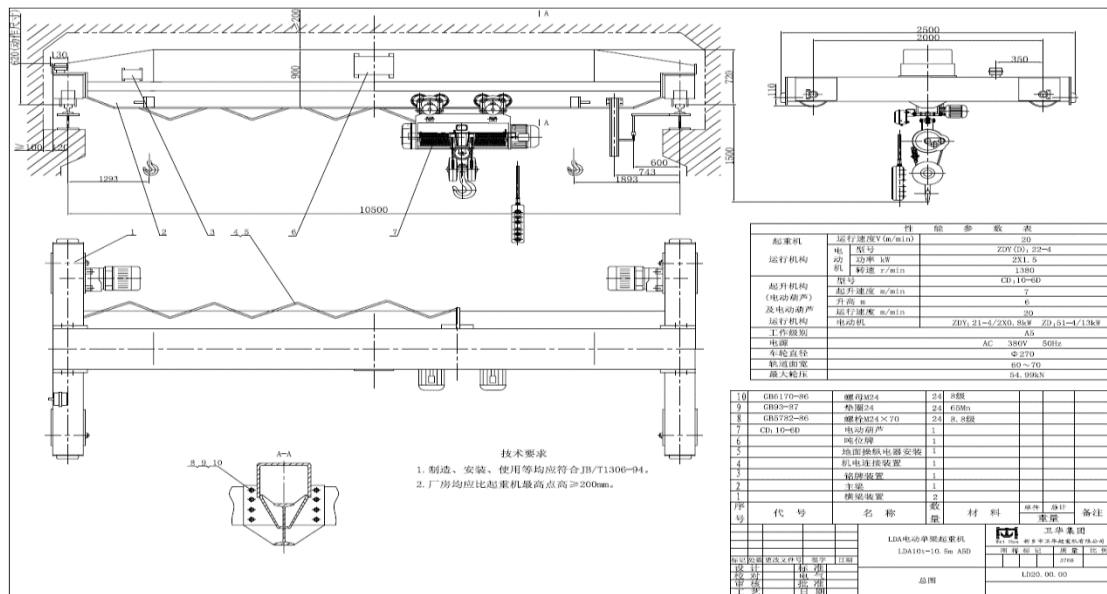
# WEIHUA GROUP

ADD: Weihua Rd., Changyuan County, Henan, China  
 Web: www.cranemanufacturers.net  
 Email: overhead@cranemanufacturers.net

Please don't hesitate in contacting us by

**Email: overhead@cranemanufacturers.net** in case you require any clarification and/or further Information.

## Weihua Single Girder Overhead Crane



## Weihua MD Electric Hoist

